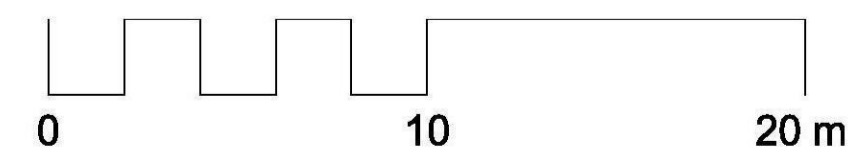
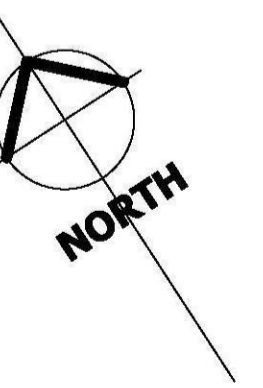
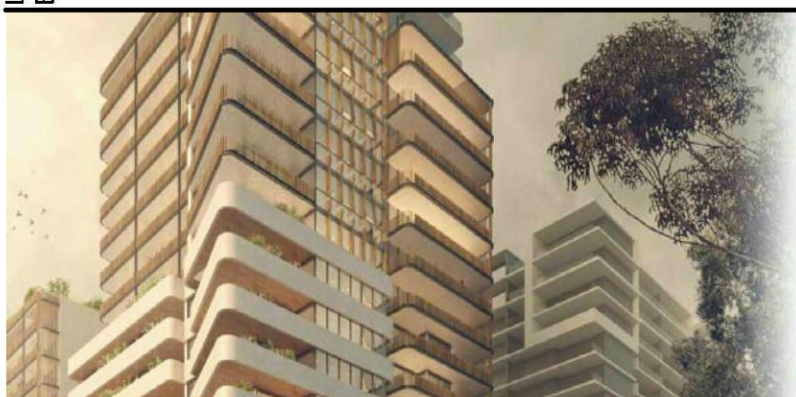


1 Level 18 Roof
1:200



C:\Users\DavidP\Documents\level18
Local Files\4232_Oxford St
Epping_CF_DA\2017_Download.rvt

14/11/2017 6:29:12 PM



Project
OXFORD PLACE
44-48 Oxford Street
Epping

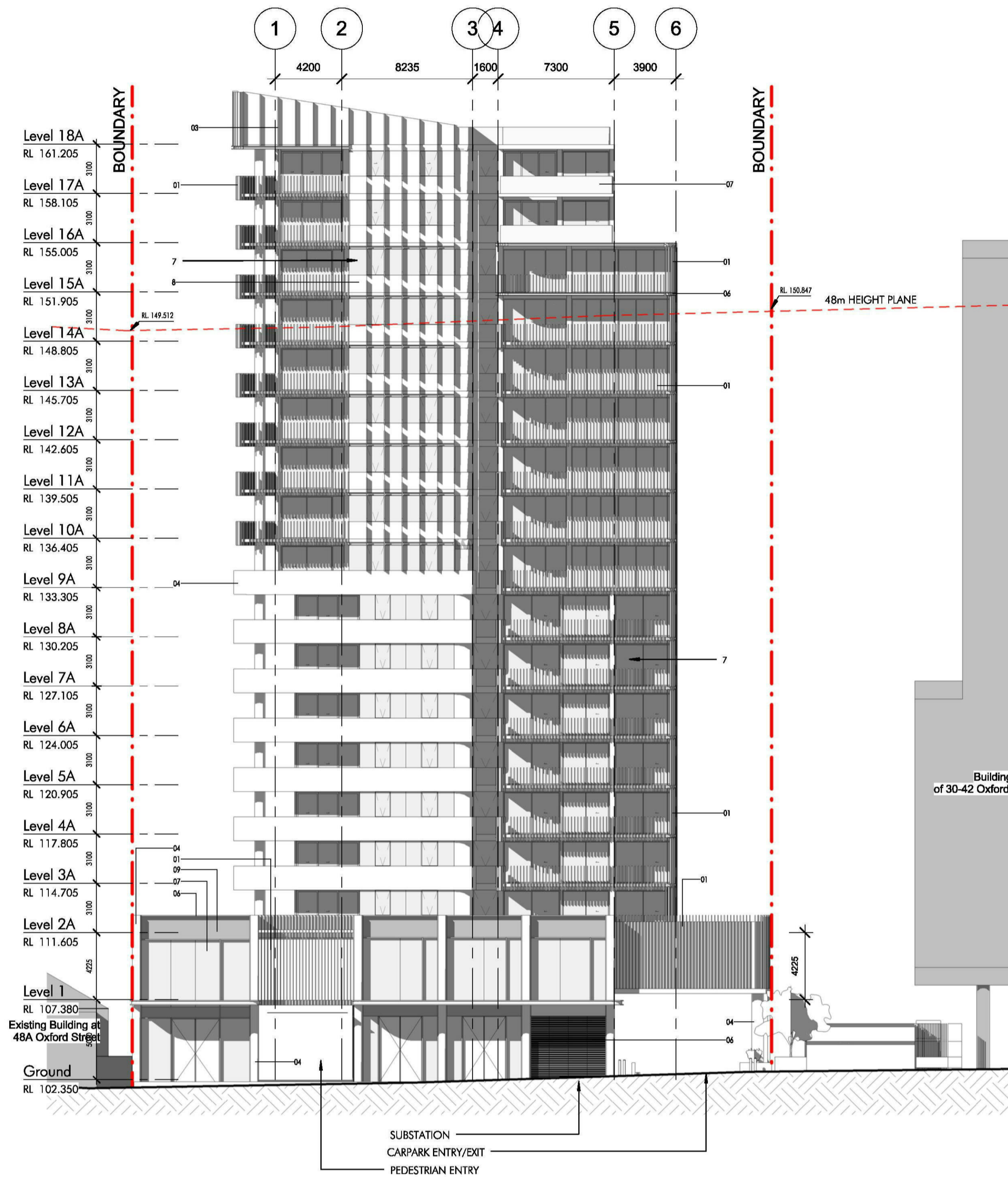
Issue	Description	Date
A	Issue for DEAP Review	03/11/17
B	Amended for DA Application	14/11/17

Title
ROOF PLAN
Scale
1:200
Date
14/11/17
Number
4232_DA-18

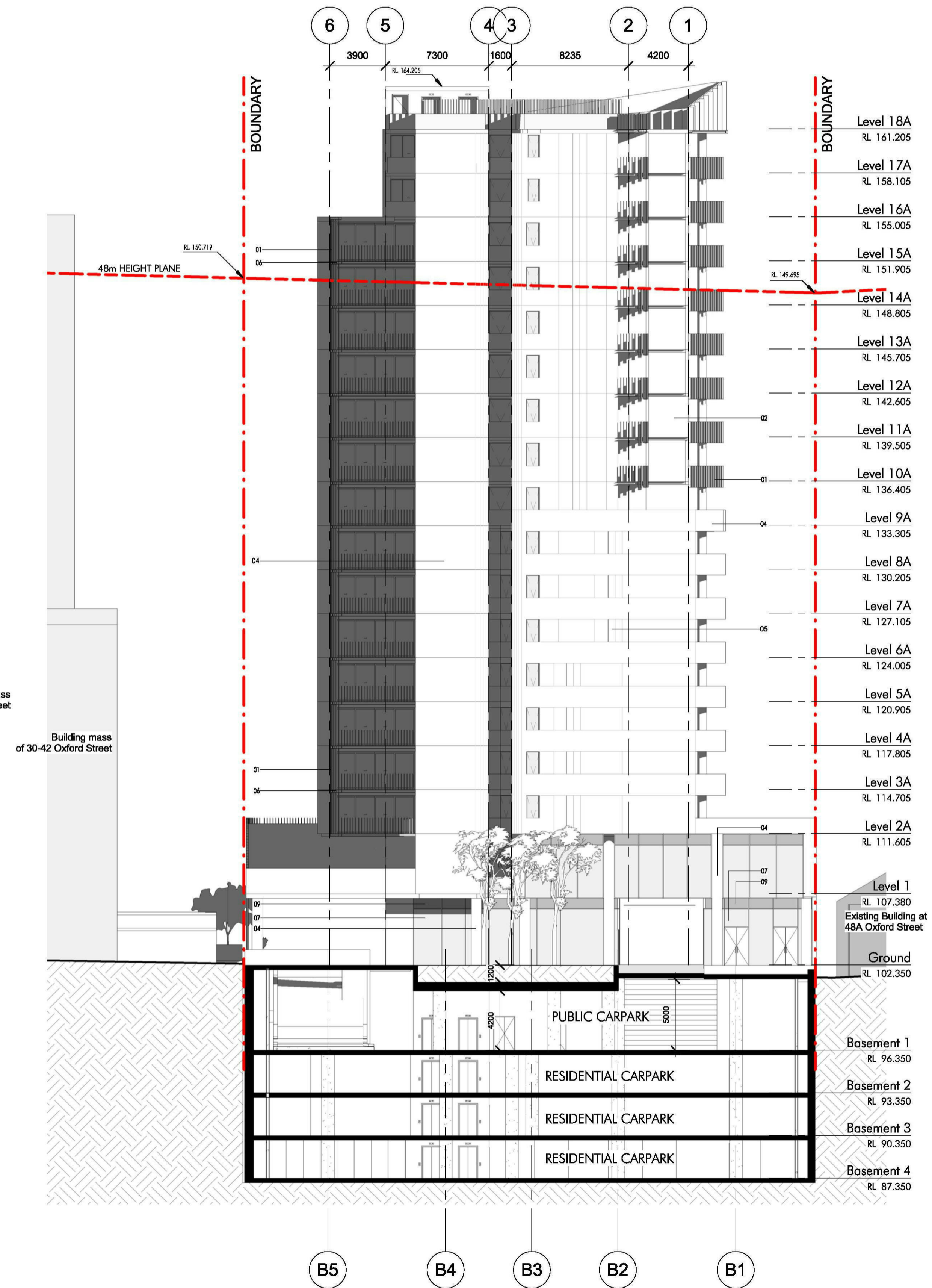


© copyright nettleon tribe partnership pty ltd

nettleon tribe partnership pty ltd ABN 58 161 683 122
117 willoughby road crows nest nsw 2065
t 02 9431 6431 f 02 9439 7474
e sydney@nettleontribe.com.au w nettleontribe.com.au

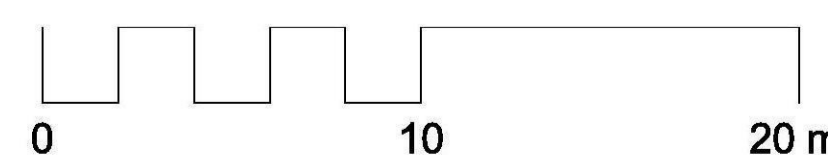


1 West Elevation-Tower A
1:200



2 East Elevation-Tower A
1:200

External Finishes Legend			
01	TIMBER BATTEN	TIMBER-LOOK ALUMINIUM BATTEN CLADDING	
02	TIMBER CLADDING	TIMBER-LOOK ALUMINIUM CLADDING	
03	TIMBER SUNSHADE	TIMBER-LOOK ALUMINIUM SUNSHADE EXTRUSION	
04	CONCRETE 01	NAWKAW CONCRETE STAINING - OFF WHITE	
05	CONCRETE 02	NAWKAW CONCRETE PRECAST PATTERN - OFF WHITE	
06	POWDERCOATED ALUMINIUM	WINDOW FRAMES, PFC SECTIONS DULUX "WAYWARD GREY"	
07	GLAZING 01	CLEAR GLASS ALUMINIUM FRAMED WINDOWS/DOORS	
08	GLAZING 02 - COLOURBACK GLASS	COLOURBACK GLASS DULUX "PARTITA"	
09	METAL SHEET	METAL/ALUMINIUM CLADDING	

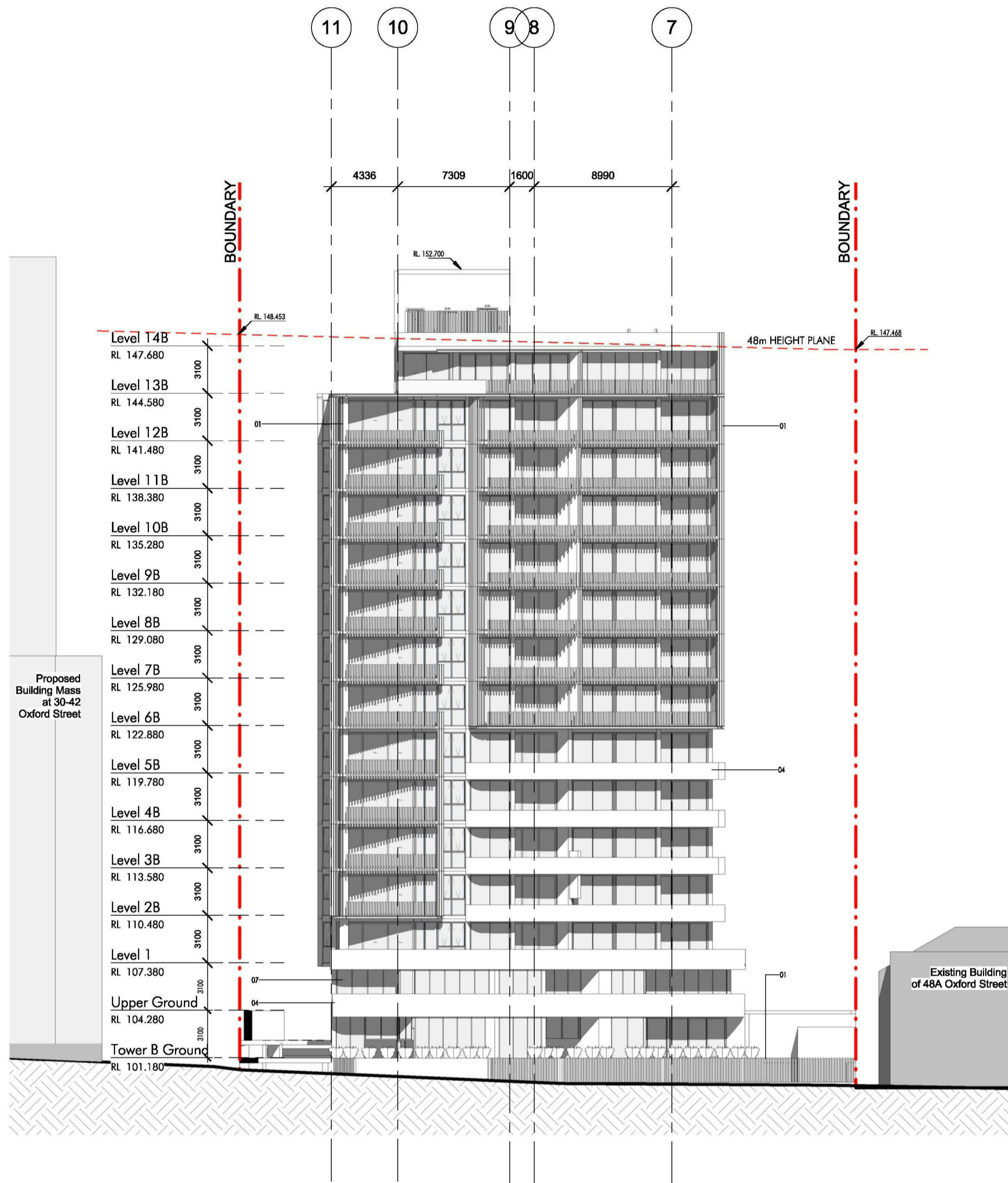


C:\Users\Nathan\Documents\Revit Local Files\4232_Oxford St Epping_CF_DA\2017\1_nathan.nkx.rvt 15-Nov-17 11:52:36 AM

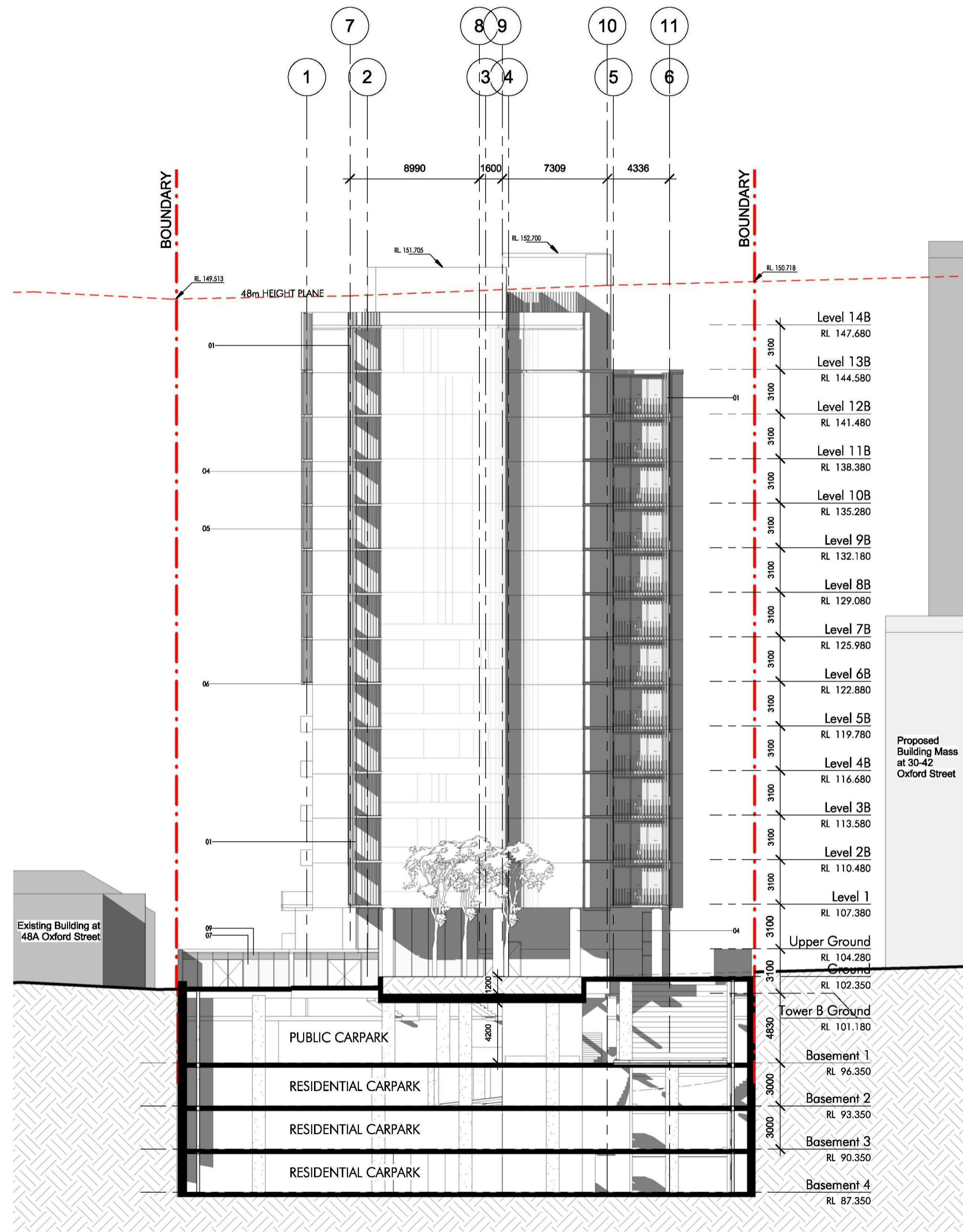
Project
OXFORD PLACE
44-48 Oxford Street
Epping

Issue	Description	Date
1	Draft Issue for Information	04/05/16
2	Issue for Coordination	27/05/16
A	Issue for DA Application	06/06/16
B	Issue for DEAP Review	03/11/17
C	Amended for DA Application	14/11/17

Title **EAST & WEST ELEVATIONS-TOWER A**
Scale
Date 14/11/17
Number 4232_DA-21
© copyright nettleton tribe partnership ply ltd

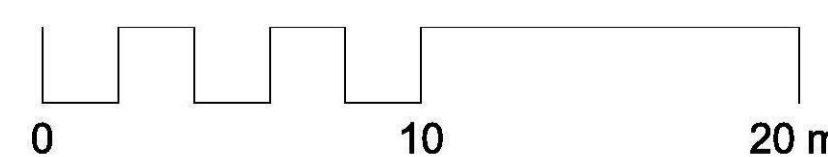


1 East Elevation-Tower B
1:200



2 West Elevation-Tower B
1:200

External Finishes Legend			
01	TIMBER BATTEN	TIMBER-LOOK ALUMINIUM BATTEN CLADDING	
02	TIMBER CLADDING	TIMBER-LOOK ALUMINIUM CLADDING	
03	TIMBER SUNSHADE	TIMBER-LOOK ALUMINIUM SUNSHADE EXTRUSION	
04	CONCRETE 01	NAWKAW CONCRETE STAINING - OFF WHITE	
05	CONCRETE 02	NAWKAW CONCRETE PRECAST PATTERN - OFF WHITE	
06	POWDERCOATED ALUMINIUM	WINDOW FRAMES, PFC SECTIONS DULUX "WAYWARD GREY"	
07	GLAZING 01	CLEAR GLASS ALUMINIUM FRAMED WINDOWS/DOORS	
08	GLAZING 02 - COLOURBACK GLASS	COLOURBACK GLASS DULUX "PARTIA"	
09	METAL SHEET	METAL/ALUMINIUM CLADDING	



C:\Users\Nathan\Documents\Revit Local Files\4232_Oxford St Epping_CF_DA\2017\l_nathancoke.rvt 15-Nov-17 11:53:05 AM



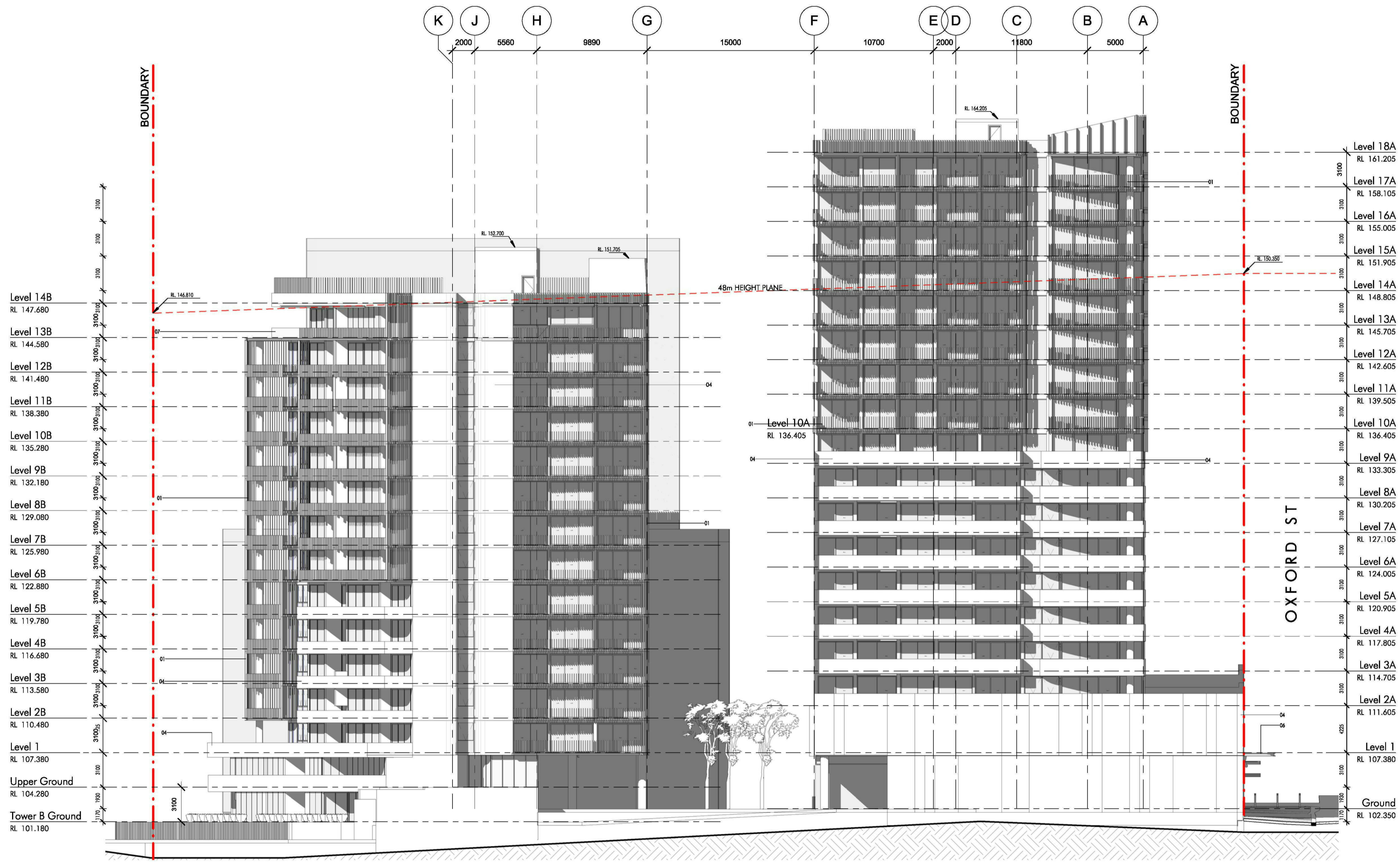
Project
OXFORD PLACE
44-48 Oxford Street
Epping

Issue	Description	Date
1	Draft Issue for Information	04/05/16
2	Issue for Coordination	27/05/16
A	Issue for DA Application	06/06/16
B	Issue for DEAP Review	03/11/17
C	Amended for DA Application	14/11/17

Title **EAST & WEST ELEVATIONS-TOWER B**
Scale
Date 14/11/17
Number 4232_DA-22
© copyright nettleton tribe partnership pty ltd

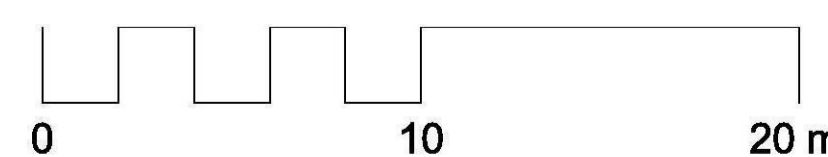


nettleton tribe partnership pty ltd ABN 58 161 683 122
117 willoughby road crows nest nsw 2065
t 02 9431 6431 f 02 9439 7474
e sydney@nettletontribe.com.au w nettletontribe.com.au



External Finishes Legend			
01	TIMBER BATTEN	TIMBER-LOOK ALUMINIUM BATTEN CLADDING	
02	TIMBER CLADDING	TIMBER-LOOK ALUMINIUM CLADDING	
03	TIMBER SUNSHADE	TIMBER-LOOK ALUMINIUM SUNSHADE EXTRUSION	
04	CONCRETE 01	NAWKAW CONCRETE STAINING - OFF WHITE	
05	CONCRETE 02	NAWKAW CONCRETE PRECAST PATTERN - OFF WHITE	
06	POWDERCOATED ALUMINIUM	WINDOW FRAMES, PFC SECTIONS DULUX "WAYWARD GREY"	
07	GLAZING 01	CLEAR GLASS ALUMINIUM FRAMED WINDOWS/DOORS	
08	GLAZING 02 - COLOURBACK GLASS	COLOURBACK GLASS DULUX "PARTITA"	
09	METAL SHEET	METAL/ALUMINIUM CLADDING	

1 North Elevation
1:200



C:\Users\Nathan\Documents\Revit Local Files\4232_Oxford St Epping_CFD\2017\1_nathan.nvt

15-Nov-17 11:53:43 AM



Project
OXFORD PLACE
44-48 Oxford Street
Epping

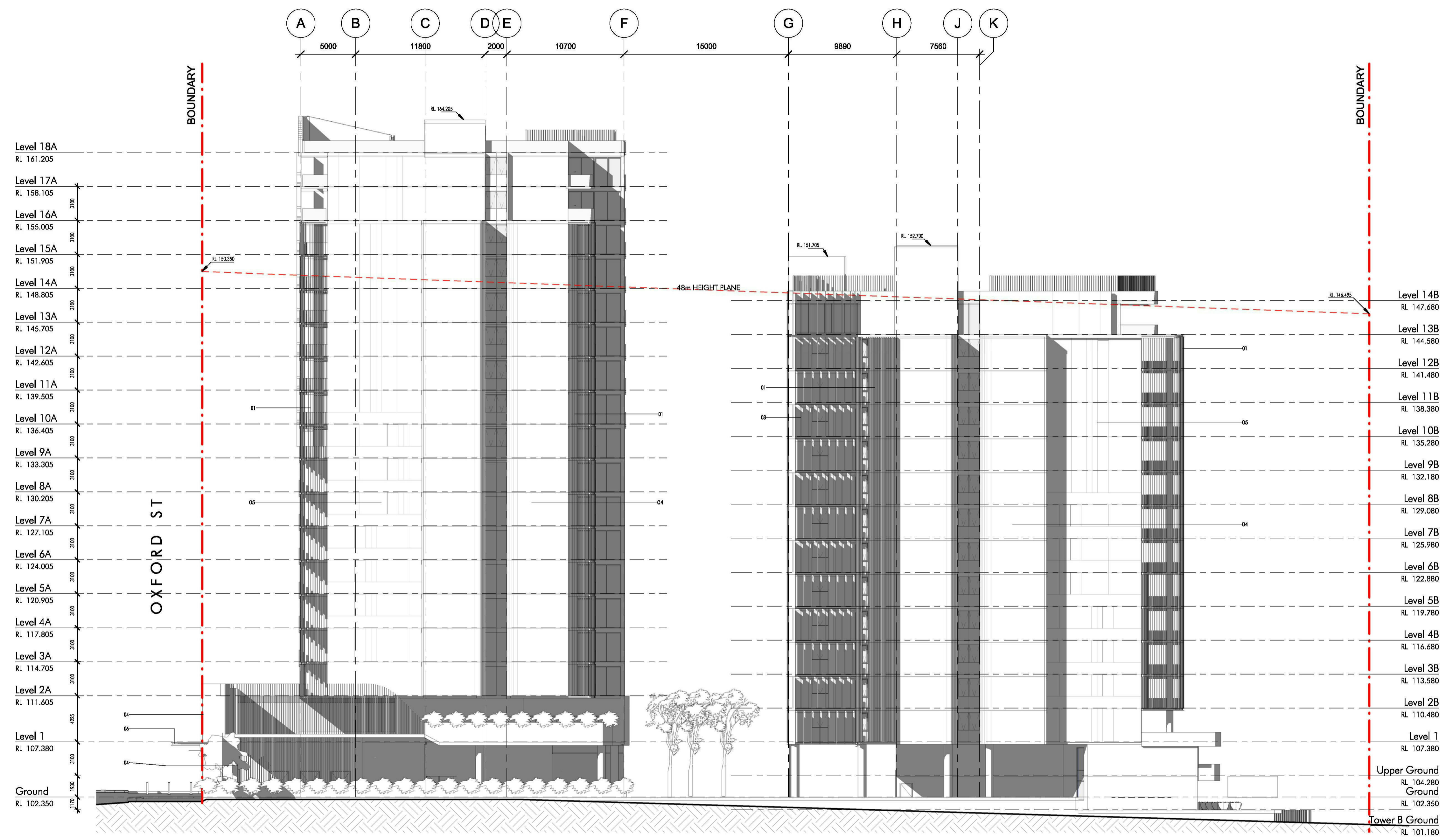
Issue	Description	Date
1	Draft Issue for Information	04/05/16
2	Issue for Coordination	27/05/16
A	Issue for DA Application	06/06/16
B	Issue for DEAP Review	03/11/17
C	Amended for DA Application	14/11/17

Title NORTH ELEVATION
Scale 1:200
Date 14/11/17
Number 4232_DA-23



nettleon tribe partnership pty ltd ABN 58 161 683 122
117 willoughby road crows nest nsw 2065
1 02 9431 6431 f 02 9439 7474
e sydney@nettleontribe.com.au w nettleontribe.com.au

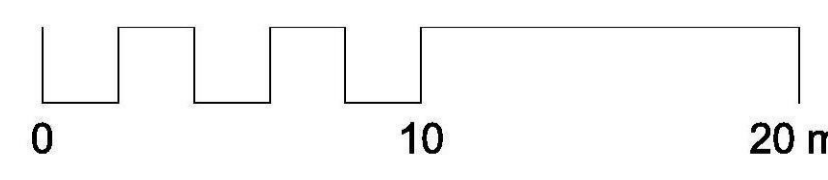
© copyright nettleon tribe partnership pty ltd



External Finishes Legend

01	TIMBER BATTEN	TIMBER-LOOK ALUMINIUM BATTEN CLADDING	
02	TIMBER CLADDING	TIMBER-LOOK ALUMINIUM CLADDING	
03	TIMBER SUNSHADE	TIMBER-LOOK ALUMINIUM SUNSHADE EXTRUSION	
04	CONCRETE 01	NAWKAW CONCRETE STAINING - OFF WHITE	
05	CONCRETE 02	NAWKAW CONCRETE PRECAST PATTERN - OFF WHITE	
06	POWDERCOATED ALUMINIUM	WINDOW FRAMES, PFC SECTIONS DULUX "WAYWARD GREY"	
07	GLAZING 01	CLEAR GLASS ALUMINIUM FRAMED WINDOWS/DOORS	
08	GLAZING 02 - COLOURBACK GLASS	COLOURBACK GLASS DULUX "PARTITA"	
09	METAL SHEET	METAL/ALUMINIUM CLADDING	

1 South Elevation
1:200



C:\Users\Nathan\Documents\Revit Local Files\4232_Oxford St Epping_CF_DA\2017\l_nathan.nvt

15-Nov-17 11:55:11 AM

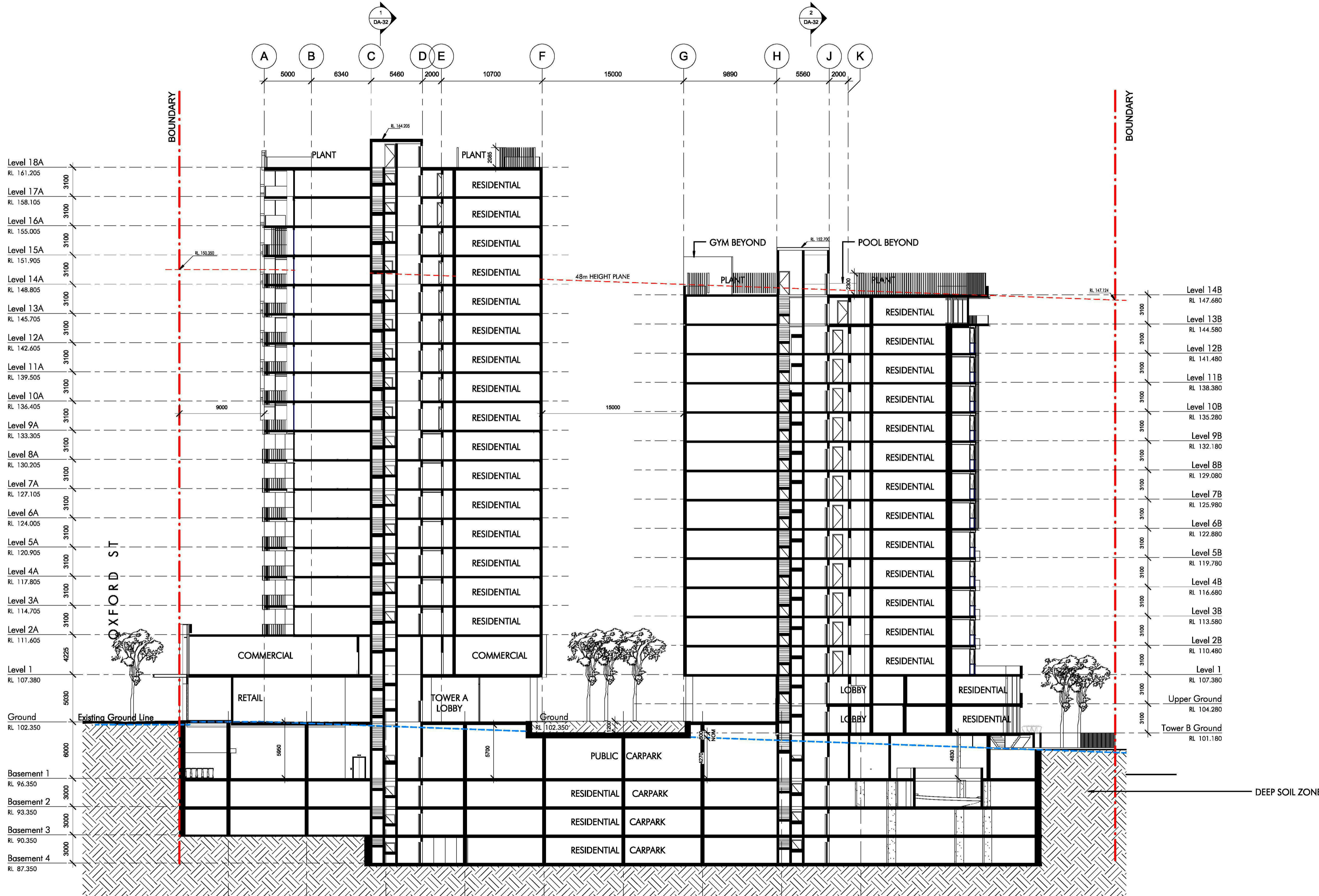


Project
OXFORD PLACE
44-48 Oxford Street
Epping

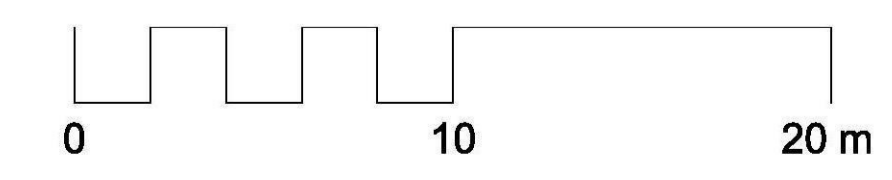
Issue	Description	Date
1	Draft Issue for Information	04/05/16
2	Issue for Coordination	27/05/16
A	Issue for DA Application	06/06/16
B	Issue for DEAP Review	03/11/17
C	Amended for DA Application	14/11/17

Title SOUTH ELEVATION
Scale 1:200
Date 14/11/17
Number 4232_DA-24
© copyright nettleton tribe partnership ply ltd

nettleton tribe partnership pty ltd ABN 58 161 683 122
117 willoughby road crows nest nsw 2065
1 02 9431 6431 f 02 9439 7474
e sydney@nettletontribe.com.au w nettletontribe.com.au



1 Section A
1:200



C:\Users\DavidP\Documents\Revit
Local Files\4232_Oxford St
Epping_Cf_DAP2017_Download.rvt

14/11/2017 6:33:46 PM



Project
OXFORD PLACE
44-48 Oxford Street
Epping

Issue	Description	Date
1	Draft Issue for Information	08/04/16
2	Draft Issue for Information	20/04/16
3	Draft Issue for Information	04/05/16
4	Issue for Coordination	27/05/16
A	Issue for DA Application	06/06/16
B	Issue for DEAP Review	03/11/17
C	Amended for DA Application	14/11/17

Title
SECTION A
Scale
1:200
Date
14/11/17
Number
4232_DA-31



nettleon tribe partnership pty ltd ABN 58 161 683 122
117 willoughby road crows nest nsw 2065
102 9431 6431 f 02 9439 7474
o sydney@nettleontribe.com.au w nettleontribe.com.au

© copyright nettleon tribe partnership pty ltd

C:\Users\DavidP\Documents\141117\Local Files\4232_Oxford St Epping_C\DA\2017\Drawn.rvt

14/11/2017 6:54:30 PM

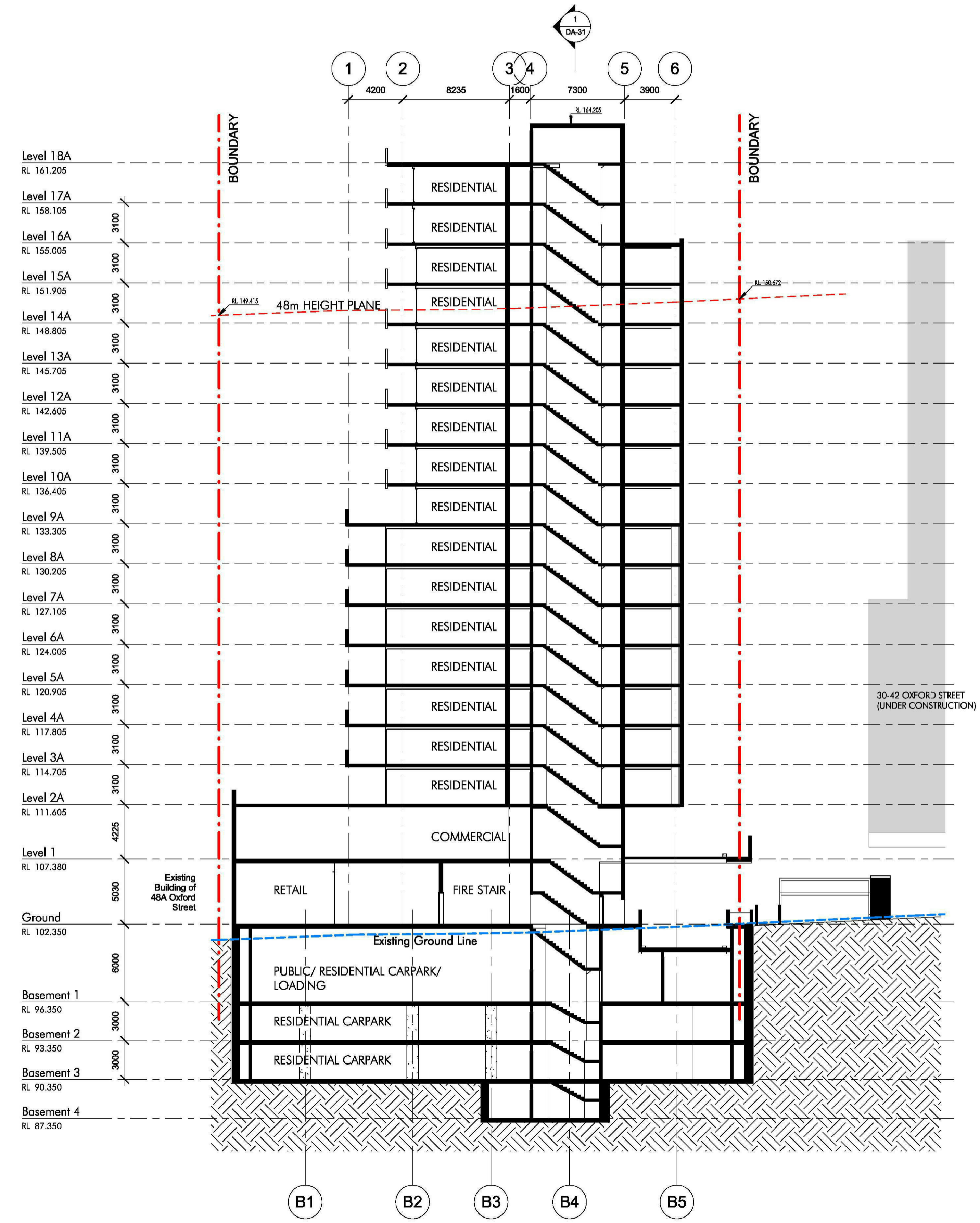


Project
OXFORD PLACE
44-48 Oxford Street
 Epping

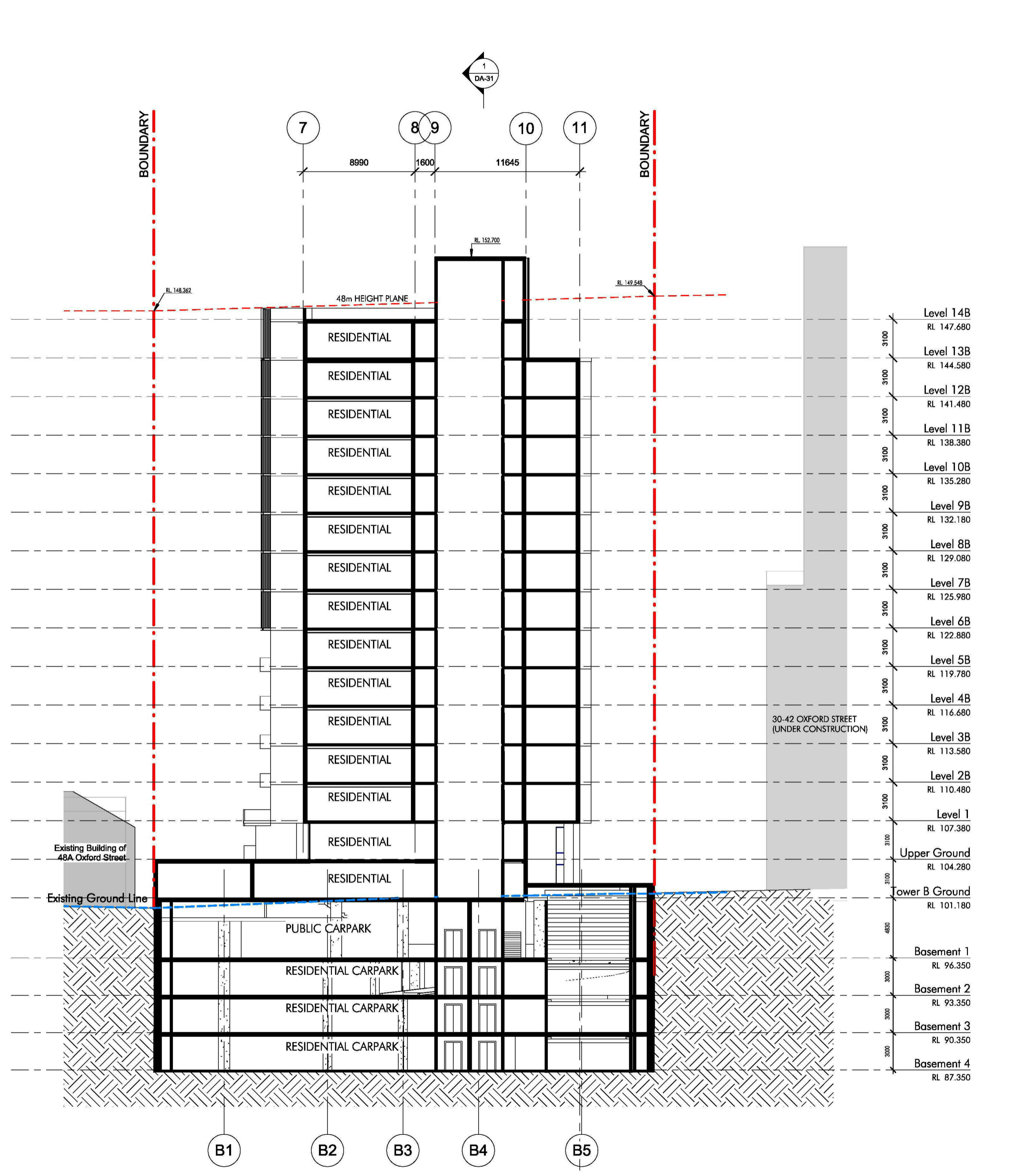
Issue	Description	Date	Title
1	Draft Issue for Information	08/04/16	
2	Draft Issue for Information	20/04/16	
3	Draft Issue for Information	04/05/16	
4	Issue for Coordination	27/05/16	
A	Issue for DA Application	06/06/16	
B	Issue for DEAP Review	03/11/17	
C	Amended for DA Application	14/11/17	

SECTION B & C
 1 : 200
 Date 14/11/17
 Number 4232_DA-32
 © copyright nettleton tribe partnership pty ltd

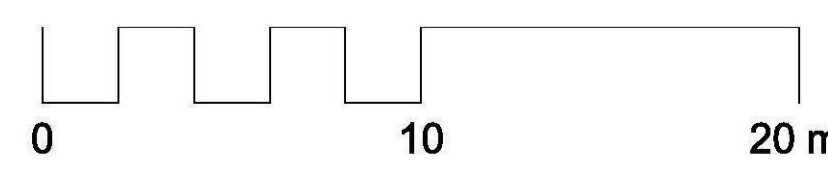
nettleton tribe partnership pty ltd ABN 58 161 683 122
 117 willoughby road crows nest nsw 2065
 102 9431 6431 f 02 9439 7474
 e sydney@nettletontribe.com.au w nettletontribe.com.au

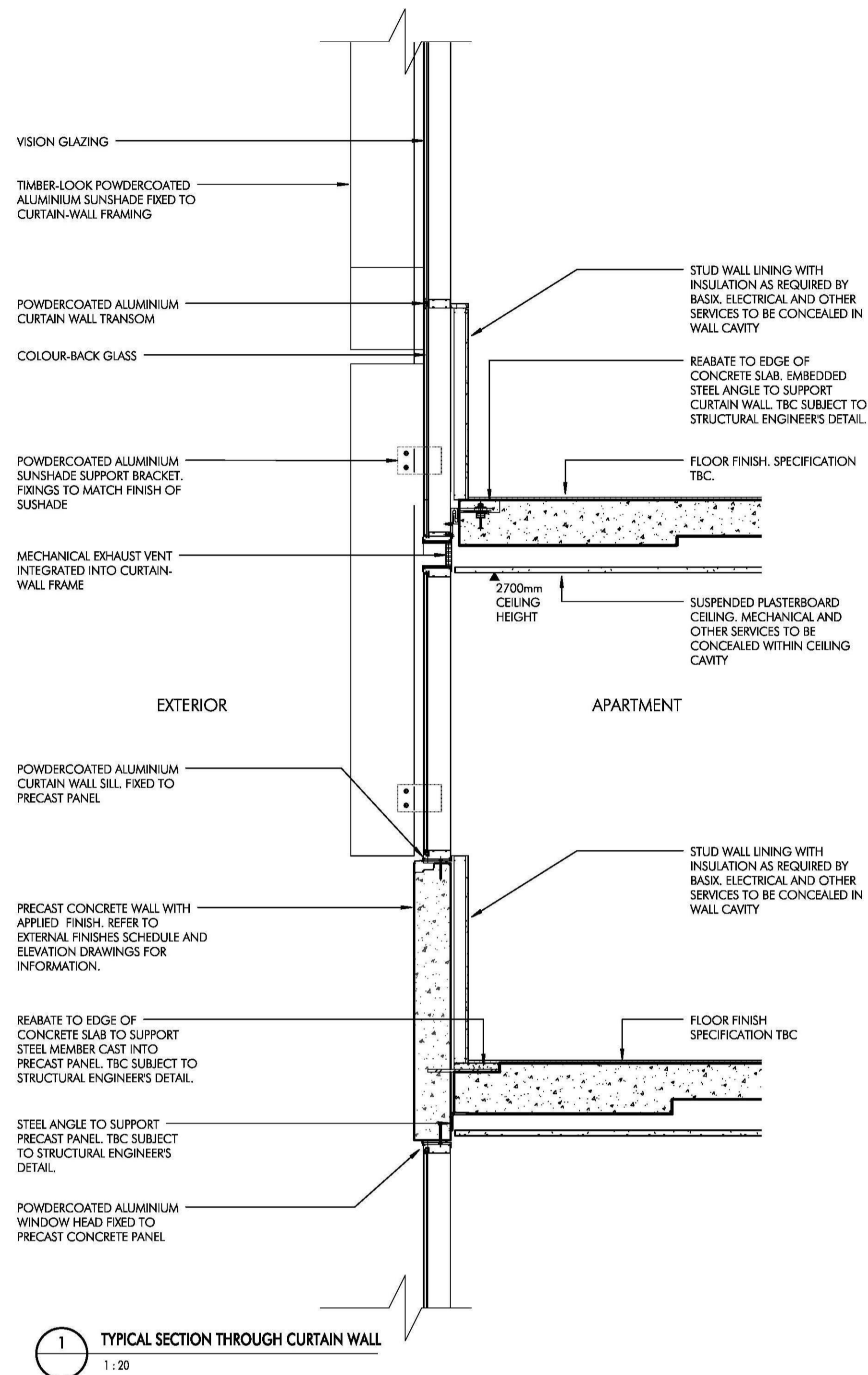


1 Section B
 1 : 200

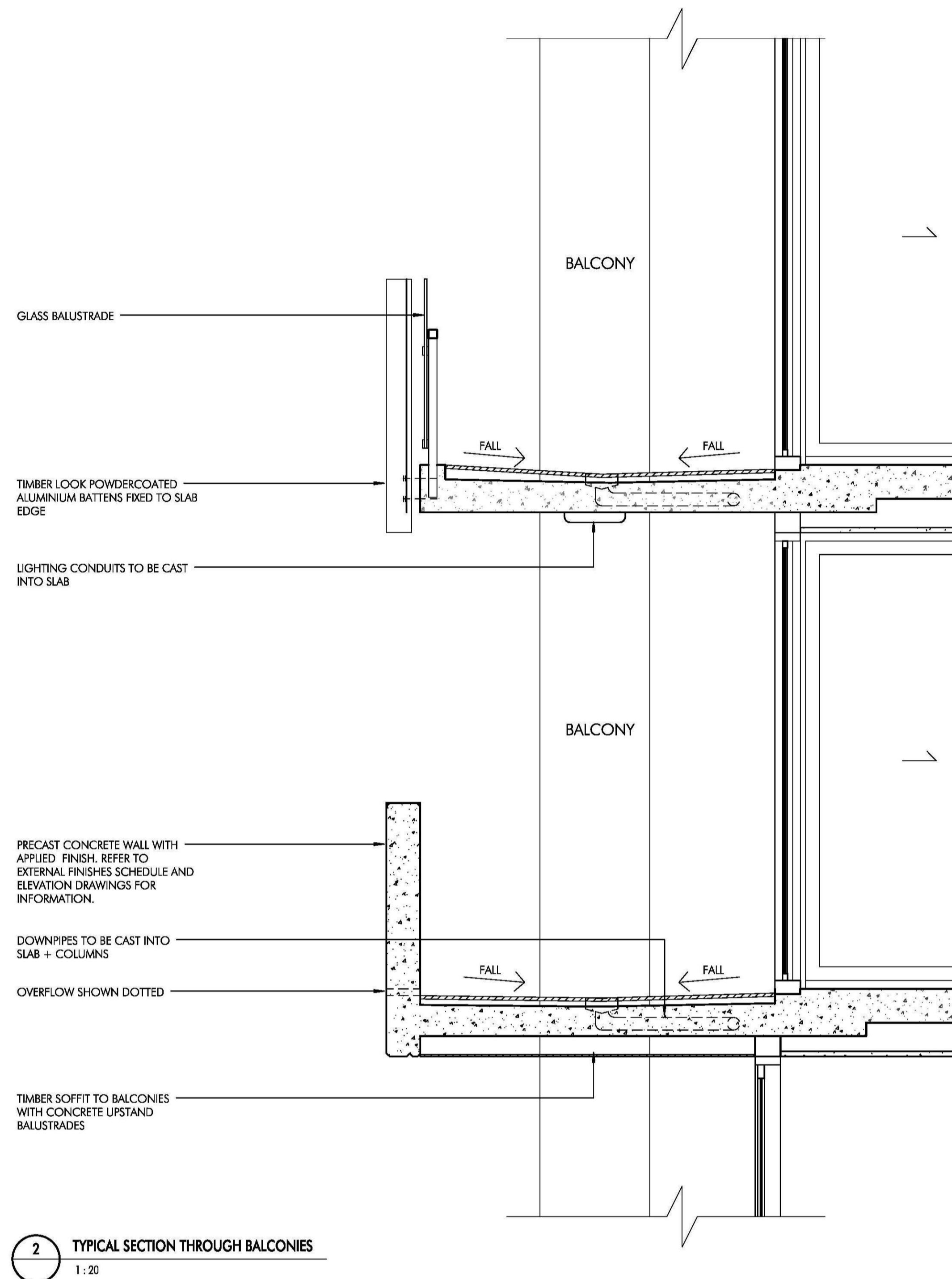


2 Section C
 1 : 200

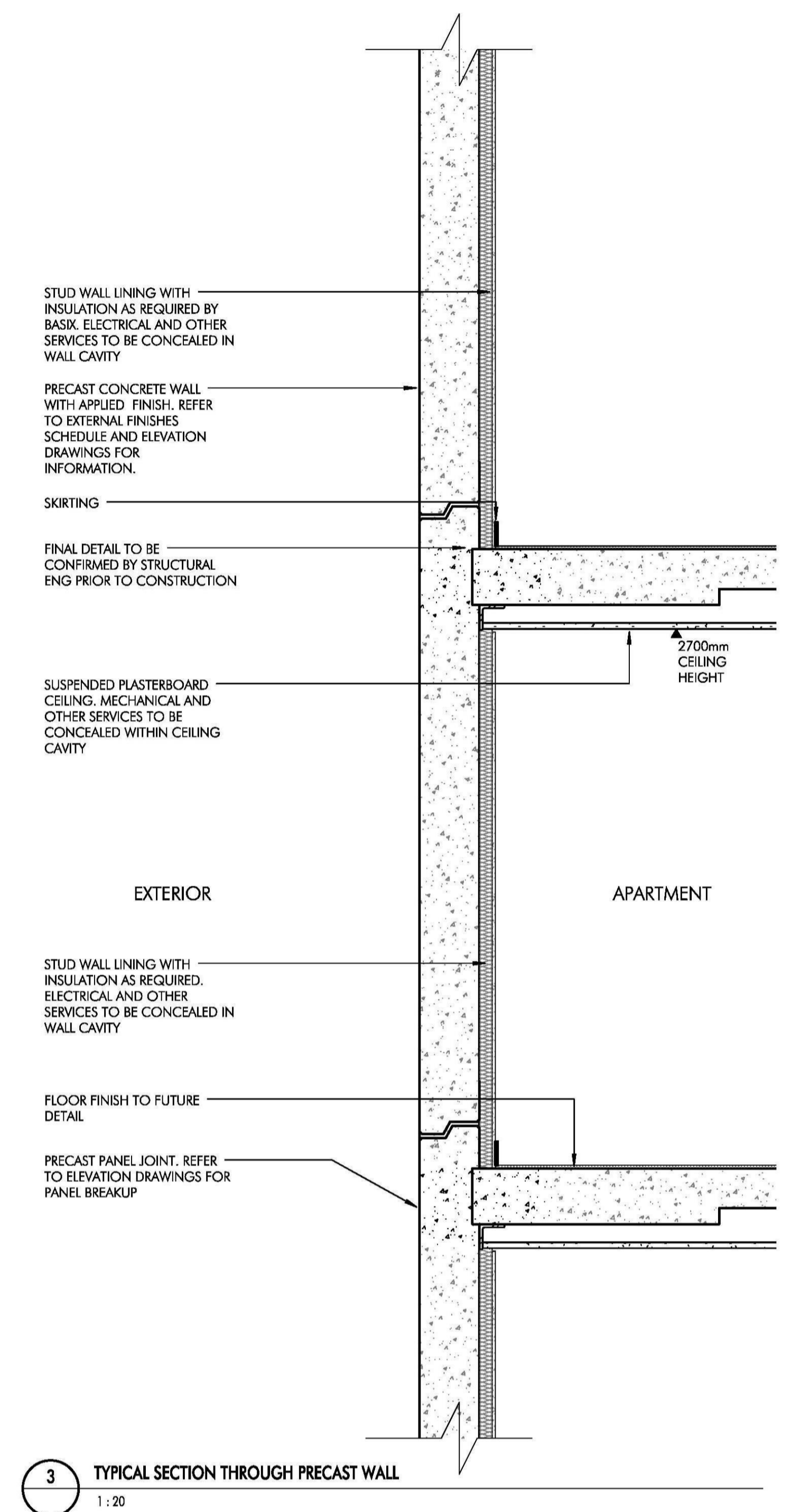




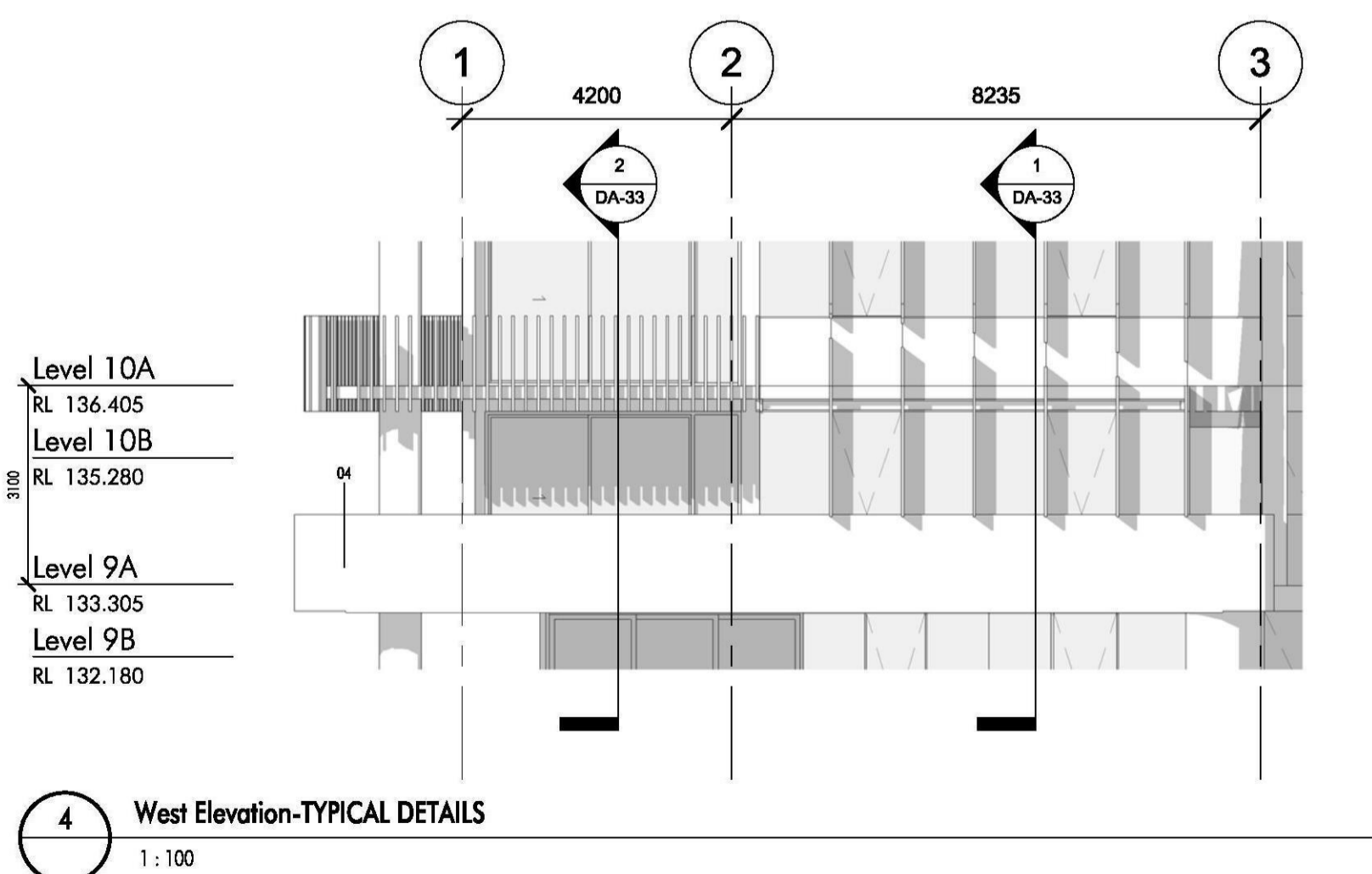
1 TYPICAL SECTION THROUGH CURTAIN WALL
1:20



2 TYPICAL SECTION THROUGH BALCONIES
1:20



3 TYPICAL SECTION THROUGH PRECAST WALL
1:20



4 West Elevation-TYPICAL DETAILS
1:100

NOTE: ALL SERVICES TO BE CONCEALED. DOWNPIPES & OTHER CONDUITS TO BE CAST INTO THE CONCRETE SLABS AND COLUMNS. ALL AIRCONDITIONING CONDENSER UNITS TO BE PLACED IN THE ROOF-TOP PLANT ENCLOSURE

NOTE: NOT FOR CONSTRUCTION. FOR DEVELOPMENT APPLICATION ONLY

C:\Users\DavidP\Documents\West
Local Files\4232_Oxford St
Epping_Cf_DA2017_Dwgn.rvt

15/11/2017 11:29:20 AM



Project
OXFORD PLACE
44-48 Oxford Street
Epping

Issue	Description	Date
A	Amended for DA Application	14/11/17

Title TYPICAL DETAIL SECTIONS
Scale As indicated
Date 14/11/17
Number 4232_DA-33
© copyright nettleton tribe partnership pty ltd

nettleton tribe partnership pty ltd ABN 58 161 683 122
117 willoughby road crows nest nsw 2065
1 02 9431 6431 f 02 9439 7474
e sydney@nettletontribe.com.au w nettletontribe.com.au